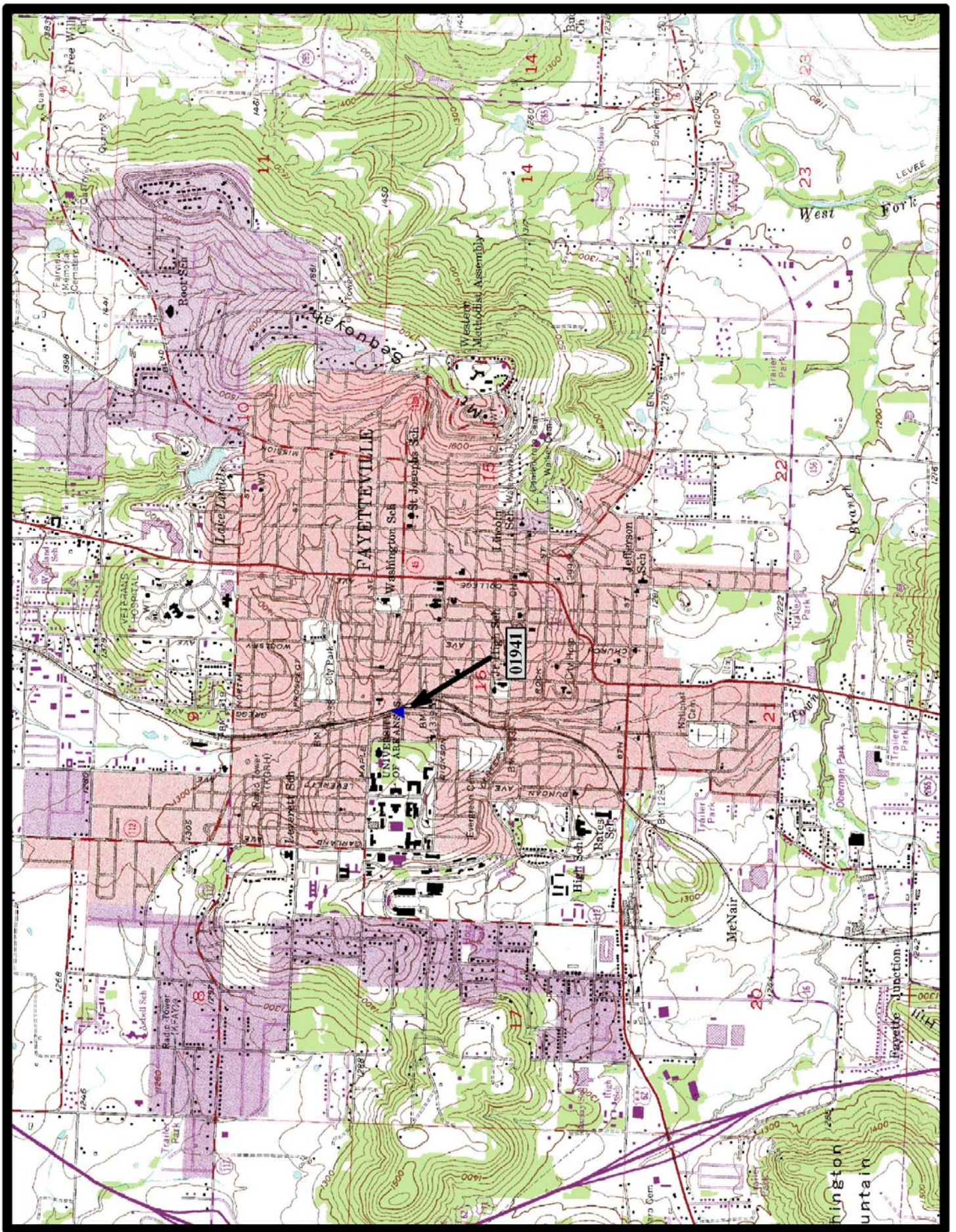


Concrete Continuous Slab Bridges



HISTORIC BRIDGE #01941
LAFAYETTE STREET
WASHINGTON COUNTY
CONCRETE CONTINUOUS SLAB
CROSSES - BURLINGTON RAILROAD
DATE OF CONSTRUCTION - 1938
BUILDER - ED. B MOONEY, INC., HOT SPRINGS, AR
HISTORIC BRIDGE INVENTORY DATE - 1995
SHPO NUMBER - WA0239
HAER NUMBER - AR-90
DATE LISTED ON NATIONAL REGISTER - 5/26/1995
LAT./LONG. 36:04:06.84, -94:09:58.44

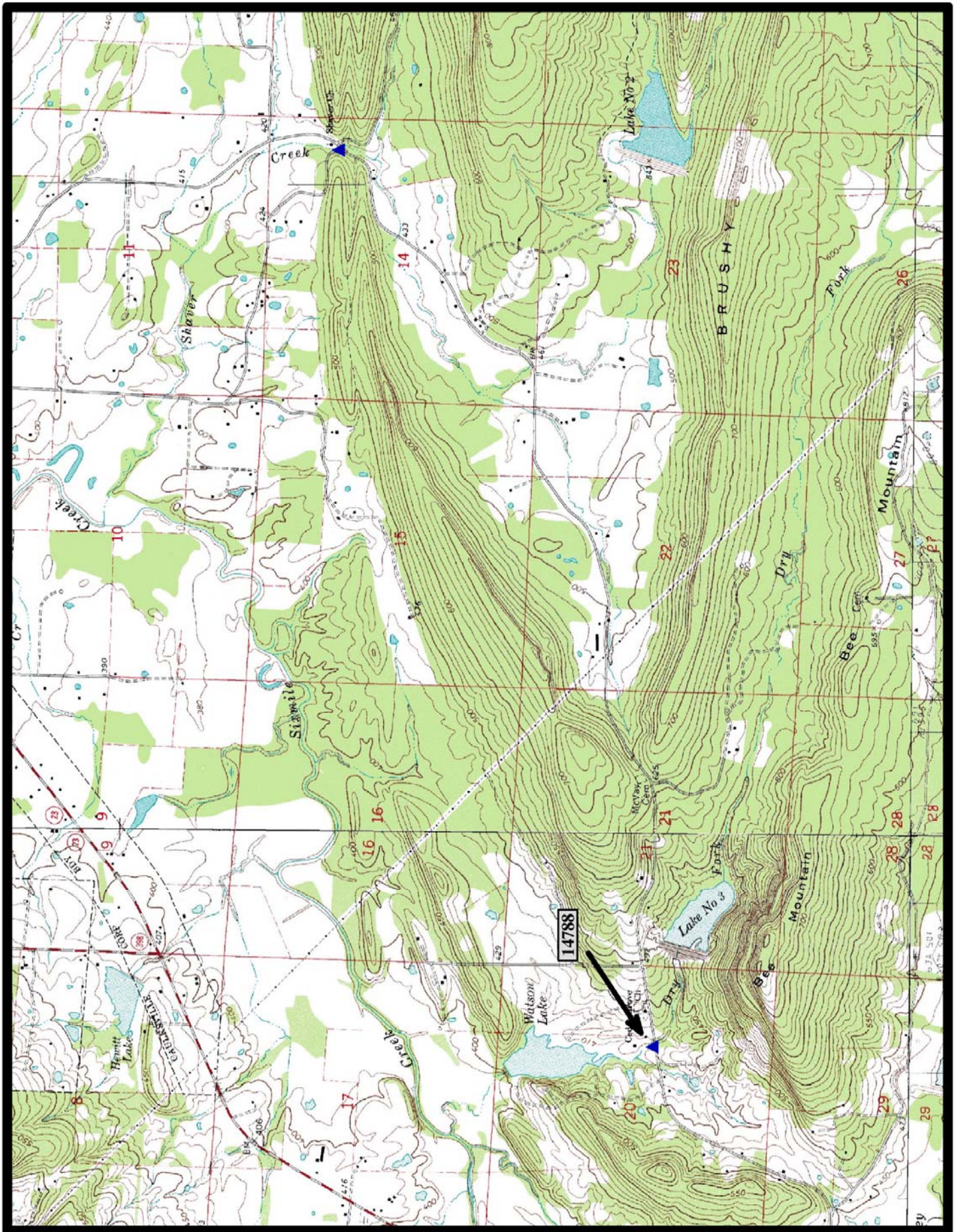


↑
North

Fayetteville 7.5 min. Quad



HISTORIC BRIDGE #14788
SHAVER ROAD (Co. Rd. 49)
LOGAN COUNTY
CONCRETE CONTINUOUS SLAB
CROSSES - DRY CREEK
DATE OF CONSTRUCTION – 1941
BUILDER - WORK PROGRESS ADMINISTRATION (WPA)
HISTORIC BRIDGE INVENTORY DATE - 2010
SHPO NUMBER –
HAER NUMBER -
DATE LISTED ON NATIONAL REGISTER -
LAT./LONG. 35:15:48.40, -93:53:19.45

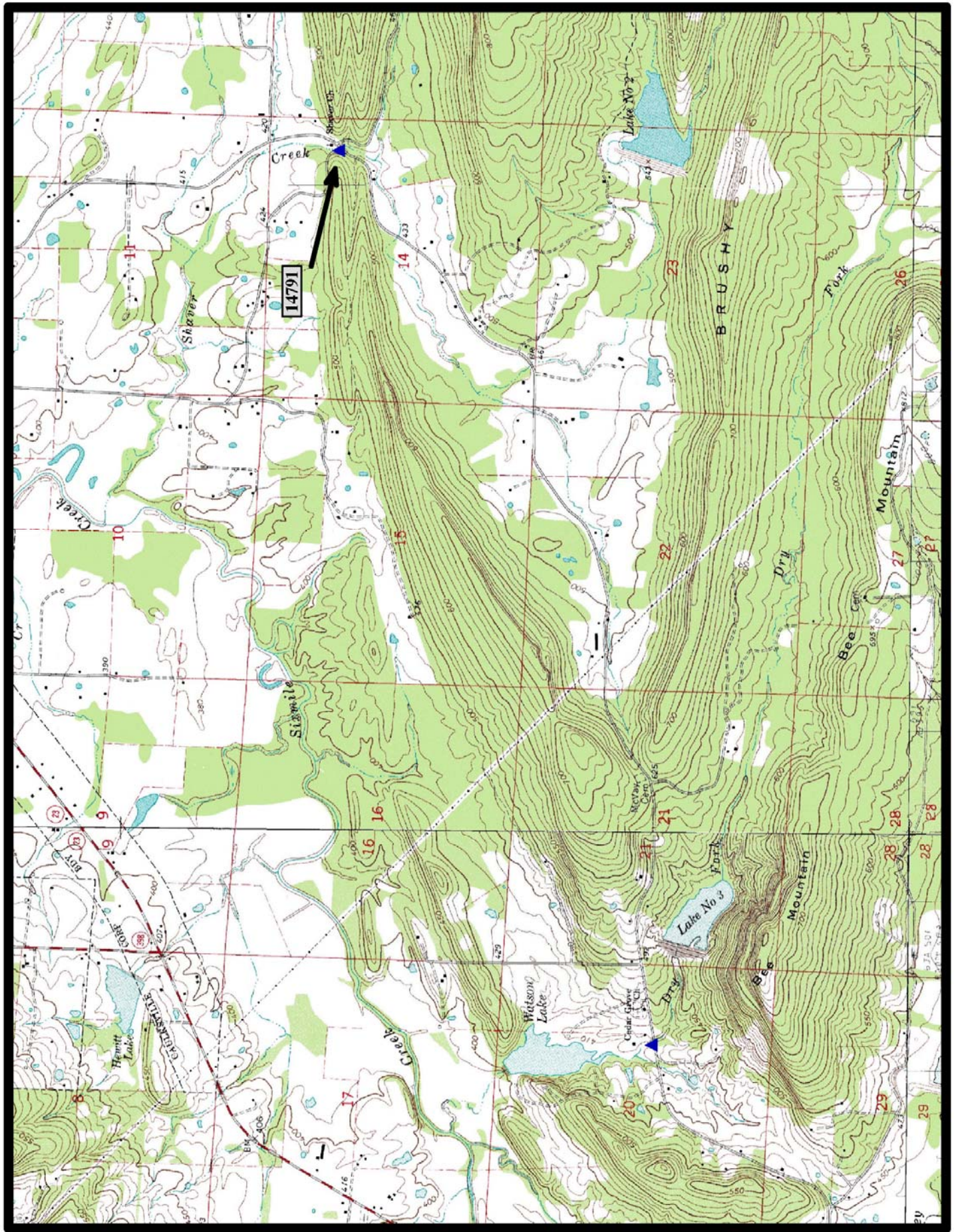


North

Branch 7.5 min. Quad



HISTORIC BRIDGE #14791
SHAVER ROAD (Co. Rd. 49)
LOGAN COUNTY
CONCRETE CONTINUOUS SLAB
CROSSES - SHAVERS CREEK
DATE OF CONSTRUCTION – 1942
BUILDER - WORK PROGRESS ADMINISTRATION (WPA)
HISTORIC BRIDGE INVENTORY DATE - 2010
SHPO NUMBER –
HAER NUMBER -
DATE LISTED ON NATIONAL REGISTER -
LAT./LONG. 35:16:49.56, -93:49:51.82

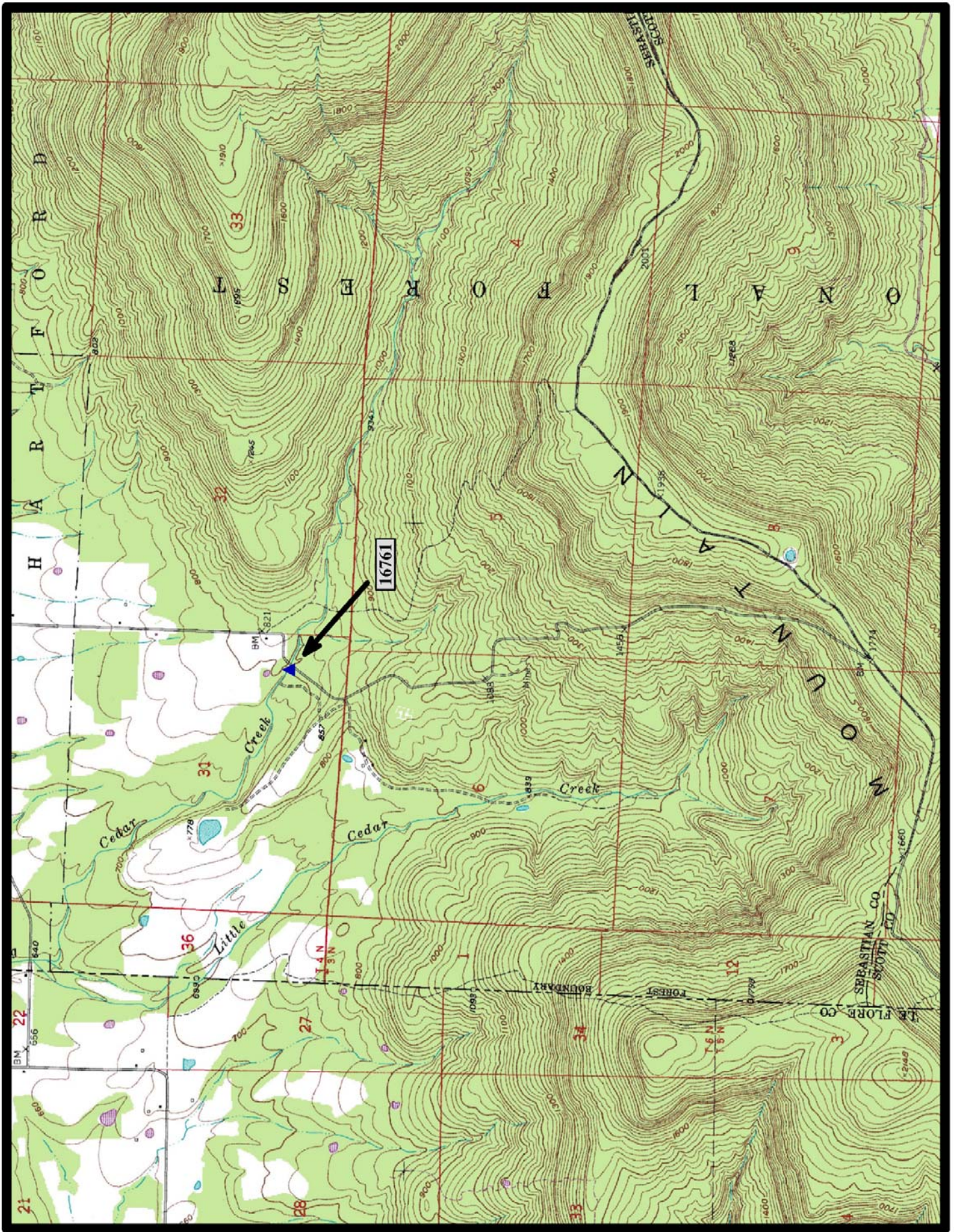


←
North

Caulksville 7.5 min. Quad



HISTORIC BRIDGE #16761
COUNTY ROAD 5
SEBASTIAN COUNTY
CONCRETE CONTINUOUS SLAB
CROSSES - CEDAR CREEK
DATE OF CONSTRUCTION – 1941
BUILDER - WORK PROGRESS ADMINISTRATION (WPA)
HISTORIC BRIDGE INVENTORY DATE - 1995
SHPO NUMBER – SB0454
HAER NUMBER -
DATE LISTED ON NATIONAL REGISTER - 5/5/1995
LAT./LONG. 34:57:53.17, -92:25:34.32



North

Hartford 7.5 min. Quad